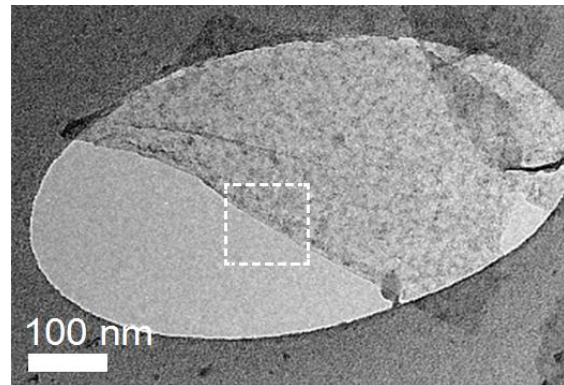


DESCRIPTION

High quality mono- and multi-layer graphene can be fabricated by using chemical vapor deposition (CVD). SHT can offer graphene growth on surfaces with a size up to 2 inch in diameter (typically 2 inch wafers). The graphene can also be transfer and patterned onto various substrates such as Si, SiO₂, SiN, GaN, glass, metals, ceramics and polymeric substrates.



FEATURES AND BENEFITS

- Large area synthesis
- Applicable on various substrates
- High thermal performance
- High electrical performance

TYPICAL APPLICATIONS

- Nanoelectronics
- Sensors
- Transparent electrodes
- Heat spreading

TYPICAL PROPERTIES OF SHT CVD Graphene	
PROPERTY	
Color	Transparent or black, volume dependant
Thickness (Å)	Mono- and multi-layers
Size	Micron square to 2 inch wafer
Substrate	Si, SiO ₂ , metal, ceramic and polymeric substrates